



In the know about...Burton Bradstock



This issue:

- National Trust update on plans for Burton Bradstock & Hive Beach.
- What's new
- Contacts

Fishermen's Green



Feedback from Rob Rhodes, NT's Head Warden for West Dorset, indicates that discussions are progressing well with the plans for the new Fishermen's hut.

The new hut will be block built and timber clad with a slate roof to match café and will be constructed by the local Fishermen.



In order to take advantage of the removal of the old hut,

Terrain Archaeology will be undertaking some recording work of remains of the hut base (which probably dates back to WWII) and keep a watching brief on the whole site as the work is progressed, so that any other finds are logged and collected.

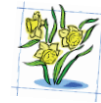
We'll keep you informed of any significant finds.



Welcome to the Third Edition of the Newsletter

National Trust update - April 2009

All change at Burton Bradstock Car Park...



Greetings from the National Trust staff team in West Dorset.

Almost everyone has a childhood memory of a British beach holiday- idyllic, carefree, frozen in time. Long days of hazy sunshine, promising hours of play in the sand or shingle, the vinegar soaked scent of fish and chips for a tasty tea...Ahhh....



...Well, if Hive Beach is your beach of choice,

then you will be able to sample a cornucopia of tasty local treats at the award winning Hive Beach Café, and be able to park in the soon to be refurbished car park!

Planning consent has now been given and work will commence after Easter on the 20/04/09 and is due to be completed by 22/05/09.

Contractors will be on site from 7.30am – 5.30pm including some Saturday mornings if necessary.

So, what will this mean

for visitors to Hive beach?

Well, NT's Building Surveyor, along with members of the West Dorset staff team have met with the contractors on site to discuss access and safe routes to the beach and café during the period of the works.

Delivery lorries will turn in the beach access area, which will be controlled by the café and NT's Roving Recruiter. During the last week of the contract there will be no access to the lower section of Beach Road whilst the construction of a raised path from the car park to the café and repairs to end of road are undertaken.

Access for emergency vehicles will be through the car park during this week.

Public parking will be in the upper grassed areas. Once again, please be assured that safe access routes for pedestrians to the beach and café will be retained and maintained throughout

the period of the contract. We will keep you informed of changes.

The seasonal car park warden will help maximise capacity by directing cars to park in the most efficient way, and disabled parking will be available in the lower car park adjacent to the beach wall and up by the café entrance. This is in response to requests that came from consultations at the Burton Bradstock 'surgeries'.

The Pay & display machines have now been installed and went 'live' on the 1st April 09. No change for NT members who can still park at Hive Beach for free! So please remember to clearly display your membership stickers! Income generated from the pay & display machines will be re-invested across the West Dorset properties and at Burton Bradstock to help maintain and conserve the landscape and to help facilitate Guardianship schemes with local schools.

Hive Beach Café

Steve Attrill and his team at the Hive Beach Café have scooped *Coast* magazine's 2009 Award for Best Coastal Café, Pub or Restaurant!



Congratulations from the National Trust West Dorset staff team.

It's a fantastic accolade and NT are delighted to



have such an innovative tenant.

The Hive prides itself on being the perfect seaside café where the menu reflects the wonderful diversity of what's available locally and in the South West.

Serving simple and sophisticated food, from egg and bacon breakfast baps to Lulworth hand-dived scallops, it's the perfect local meeting place, offering a snug refuge on a cold winter's morning for



coffee and a leisurely read through the Sunday papers as well as being a haven for walkers on hot, sunny days.



There's something for everyone, so be sure to go along and enjoy the wonderful scenery and landscape of this special NT site, you never know, you might just decide to join the National Trust and help us conserve this beautiful part of West Dorset.



What's new at the Hive?

For up to date information and news about what's on and what's hot at the Hive then why not sign up to receive the café's e newsletter.

Just go to: www.hivebeachcafe.co.uk and follow the links.



Lights, Camera, Action at Burton Bradstock



You may recall that in the last issue we told you about a film and media project that we (NT) had commissioned.

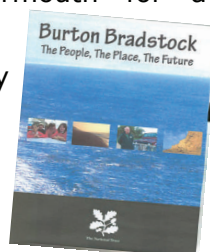
Working with Media & Film students from Yeovil college, a short DVD has now been produced featuring a snapshot of life in Burton Bradstock Village in 2009 including views, opinions and vox pops from the local community and local primary school as well as NT's involvement in the management of the site and car park.

Burton Bradstock - the place, the people, the future... Also looks at coastal erosion, local issues and the future for the village.

It's a charming film with original music composed by the students, so if you were interviewed back in November, then now's your chance to see yourself on film!

Copies of the 10 minute DVD are available from the NT office in Charmouth for a suggested donation of £3.00.

If you would like to order a copy Please contact the West Dorset office on 01297 561900.



Get the most out of your countryside!



National Trust properties in the region offer a diverse range of events and activities throughout the year. Our varied West Dorset events programme for 2009 includes a spring bluebell walk, guided countryside & nature walks on the Golden Cap Estate, Cogden and Lamberts Castle. Archaeology and history at Hod Hill, family Easter trails, geology walks, an escorted cycle ride, pirate trail and much more!

There's something for everyone, so blow the cobwebs out of autumn and winter, and make the most of the spring and summer 2009.

Pick up an events leaflet from Bob or at the Hive Café'. We hope you enjoy them and look forward to seeing you in 2009!

Dates for your diary:

Geology Walk - Burton Bradstock Enjoy a guided walk with Geologist Alan Holiday and find out about the fascinating geology associated with this stunning stretch of coastline.

Date: Saturday 16th May 2009 **Time:** 10.30am

Meet: Hive Beach Car Park **Cost** – Adults £1.00 Children 50p



The NT Doctor Will See You Now...

The Burton Bradstock surgeries are planned to continue until the completion of the car park refurbishments.

They have been a good way of meeting and getting to know the local community, so do come along if you haven't done so already. The next surgery will be on Tuesday 5th May 10am-12pm at the Hive Café.

Don't forget, if you have any questions, additional comments or concerns about the improvements or work that the National Trust are carrying out at Hive Beach and the car park and can't make it to the Tuesday morning surgeries, then please contact Caroline Richards – Visitor Services Manager for West Dorset on 01297 561900, e mail: caroline.richards@nationaltrust.org.uk or write to the National Trust at: The Court, The Street, Charmouth, Bridport, Dorset DT6 6PE.



Time Well Spent

As if all the changes at Burton weren't exciting enough, a recent NT survey revealed that *'simple pleasures provide an antidote to the much hyped recession'* which is great news for us here in West Dorset with acres of spectacular coastline, stunning views and an array of iconic and fascinating properties.

Simple pleasures such as spending time in beautiful surroundings and days out with friends and family are becoming more and more important to people. So if the dreaded recession gets people out and about spending time and money discovering and exploring all the delights that our part of beautiful West Dorset offers, then bring it on!

From the first small headland acquired, the Trust now looks after a spectacular range of coast, countryside and historic landscapes.

Our properties are managed for public benefit. Staff, volunteers and tenants are engaged daily in providing access to open spaces for people's enjoyment, providing habitats for wildlife and in improving our environment.

We can but hope that at some point on their travels they discover the delights of Hive Beach and bump into Bob, our Roving Recruiter situated on Burton Beach, who just might be able to sign them up as new members once they realise just what good value membership of the National Trust is!



If you're looking for a very special gift whether for a birthday, anniversary, mother's day, retirement or Christmas - you've just found it.

National Trust membership takes a whole year of relaxation, exploration and discovery and wraps them up into the perfect package.

Buying gift membership means you won't have to brave the high street, so it couldn't be more convenient!

Gift membership offers the following benefits to your friend, family or loved one:

- ✦ Free entry and parking at over 300 historic houses and gardens and free parking at our countryside and coastline locations
- ✦ The Members' Handbook - with full details of all the places they can visit
- ✦ Newsletters packed with details of special events at locations nearby

Three editions of our beautifully illustrated magazine exclusively for members.

Interested or want to know more? Then speak to Bob Cornish, West Dorset's Roving Recruiter at Burton Beach for more details and make the most of the sensational off site discounts! He'll be happy to help.



Just a reminder about the fees at Hive Beach car park.

Parking charges are now £1 per hour, or £5 for the whole day. The car park will remain free for NT members displaying a valid membership sticker.

The National Trust's Head Warden for West Dorset Rob Rhodes explains, "Experience elsewhere has shown that a reasonable charge does not deter visitors, and that many appreciate how it supports the charity in caring for over 250,000 hectares of stunning countryside and more than 700 miles of beautiful coastline like Burton Bradstock."

It will also help fund a car park steward, who will be on-site to help and advise visitors, manage the car park and keep it clear from litter during the season.



Contact us



The National Trust

WEST DORSET OFFICE THE COURT ·
CHARMOUTH · BRIDPORT · DORSET ·
DT6 6PE

Telephone +44 (0)1297 561900

Fax +44 (0)1297 561901

www.nationaltrust.org.uk

email:westdorset@nationaltrust.org.uk

If you would like this newsletter in an alternative format please telephone or email using the contact details above.

Introducing Sarah ...

...the new Warden for Burton Bradstock

We are delighted to announce that Sarah Kennedy has taken over from Michael Clarke as the new Warden for Burton, so over the coming weeks and months you will be seeing quite a lot more of her as she takes up her new role overseeing the management of the car park, wardening the site and working with Burton Bradstock volunteers.

In the Know finds out more about Sarah's role.

How long have you been doing your job? "I have been with the National Trust in West Dorset since September 2004, where I started as a Careership Warden on a 3 year programme, combining practical 'hands on' experience with the Warden Team & gaining academic qualifications in Environmental Conservation.

What do you do in your job? "I look after countryside for the benefit of wildlife and visitors and work with local landowners, conservation organisations and external partners who have contact or business with the National Trust. I also work with volunteer working groups to carry out practical conservation tasks, and deliver outdoor learning sessions with local schools taking part in NT's Guardianship scheme".

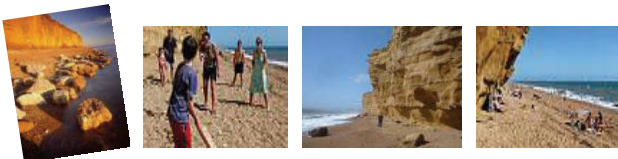
In June 2007 I moved into a two year Warden post with the West Dorset team, with specific responsibility for the running and maintenance of various car parks in the West Dorset property portfolio. Since January 2009 the post has been confirmed as permanent and I have now taken on responsibility for the management of the car park at Burton Bradstock, as well as continuing to work alongside colleagues to maintain and manage sites on the Golden Cap Estate and other West Dorset properties.

I will be working alongside Bob and look forward to getting to know more of the regular visitors to Hive Beach & Burton Bradstock".

So, look out for Sarah the next time you go to Hive Beach and say Hi!

The National Trust West Dorset Team are:

- Helen Mann - Property Manager
- Rob Rhodes - Head Warden
- Debbie Stork - Office Administrator
- Peter Preen - VSM- Clouds Hill
- Peter Yeates - Warden
- Michael Clarke- Warden
- Jon Sibthorp -Warden
- Sarah Kennedy - Warden
- Catherine Mountford - Gardener
- Hayley Dorrington - Careership Warden
- Bob Cornish - Roving Recruiter
- Tony Flux - Coastal Zone Project Manager
- Caroline Richards - VSM West Dorset



Burton Bradstock needs YOU!



The Burton Bradstock volunteer group meet on the first Tuesday of each month at the Hive Beach car park from 9.45am and carry out a range of work in and around Hive Beach and the local environs including; Practical habitat and site management including path clearance, tree planting, way marking, building fences, stiles, gates and litter removal.

There are also opportunities to assist with the organisation and running of guided walks and other events for the public, schools and groups at Burton, so if that's of interest, then do get in touch and we'll have a chat about how you can get involved.

For practical tasks you will need to wear old clothes and good boots.

Steel toe capped boots are best if you have them.

Waterproofs and wellies are a must for those 'soggy' days. We can provide work gloves but if you have your own, they might be more comfortable. Bring a packed lunch and plenty to drink as we stay on site all day. An up to date tetanus vaccination is advisable to protect against possible infection from cuts.

Training in the practical skills and safe working procedures will be provided by the Warden/s, however if you do have experience or skills in other areas, such as plant or animal survey, and would like to volunteer to use those skills, then please tell us as we have many different projects that would benefit from the help of volunteers with specialist skills.

If you would like to know more about volunteering with the National Trust or are interested in joining the Burton Bradstock volunteer working group then give us a call on 01297 561900 and speak to Caroline Richards Visitor Services Manager (VSM) for West Dorset.